

Aromat Serial Driver

© 2016 PTC Inc. All Rights Reserved.

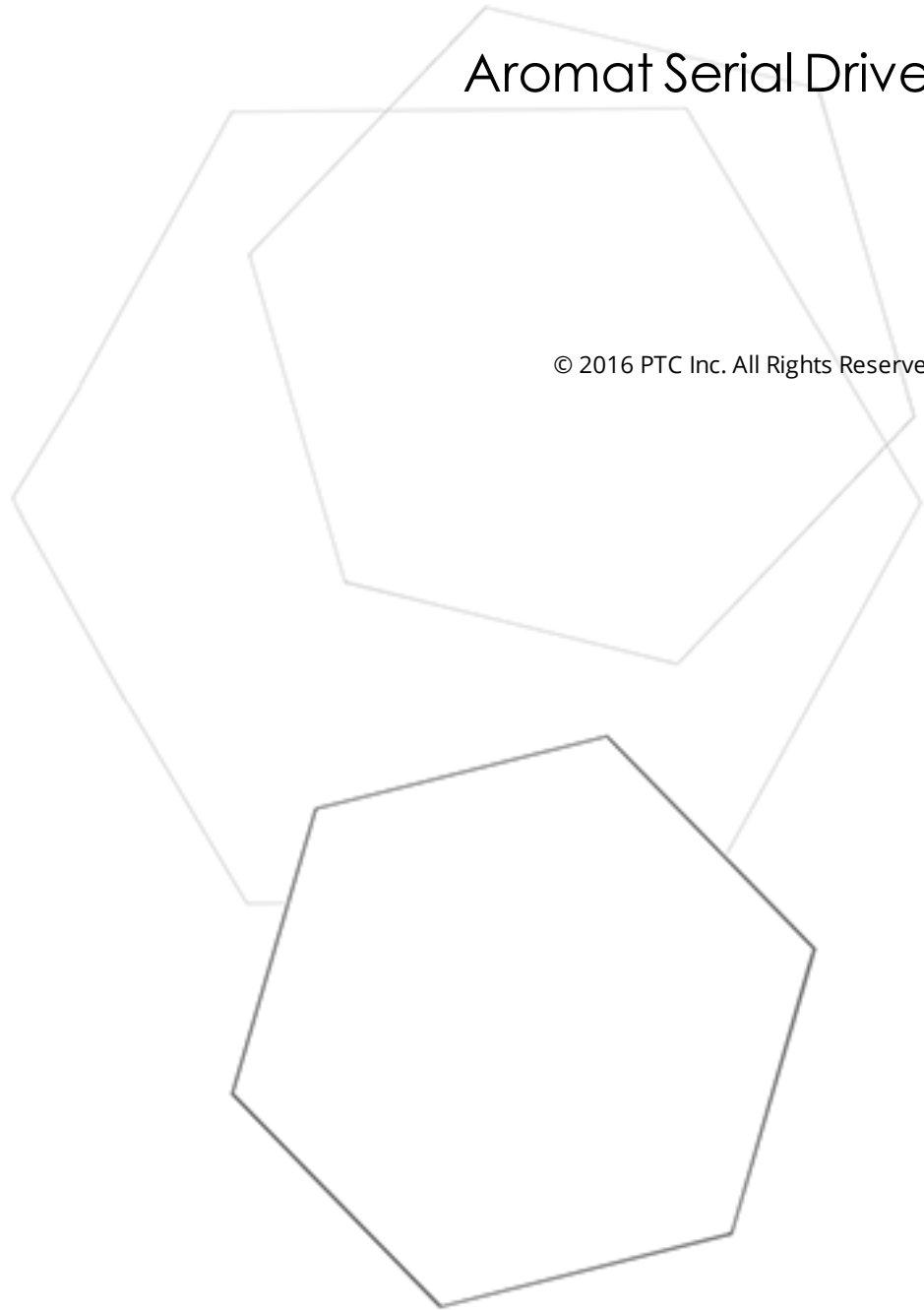


Table of Contents

Aromat Serial Driver	1
Table of Contents	2
Aromat Serial Driver	4
Overview	4
Device Setup	5
Channel Properties - General	6
Channel Properties - Serial Communications	7
Channel Properties - Write Optimizations	10
Channel Properties - Advanced	11
Device Properties - General	11
Device Properties - Scan Mode	13
Device Properties - Timing	14
Device Properties - Auto-Demotion	15
Device Properties - Redundancy	15
Modem Setup	15
Data Types Description	17
Address Descriptions	18
C16 Addressing (FP1)	18
C24 Addressing (FP1)	19
C40 Addressing (FP1)	19
Any FP Model Addressing (FP0, FPM, FP1, FP2, FP3, FP10SH)	20
Error Descriptions	22
Address '<address>' is out of range for the specified device or register	22
Data Type '<type>' is not valid for device address '<address>'	22
Device address '<address>' contains a syntax error	23
Device address '<address>' is not supported by model '<model name>'	23
Device address '<address>' is Read Only	23
Missing address	23
Communications error on '<channel name>' [<error mask>]	23
COMn does not exist	24
COMn is in use by another application	24
Error opening COMn	24
Unable to set comm properties on COMn	25
Device '<device name>' not responding	25
Unable to write to '<address>' on device '<device name>'	25
Unable to read block for address type '<mnemonic>', words <start address> - <end address>, on device '<device>'	26

Index **27**

Aromat Serial Driver

Help version 1.016

CONTENTS

Overview

What is the Aromat Serial Driver?

Device Setup

How do I configure a device for use with this driver?

Data Types Description

What data types does this driver support?

Address Descriptions

How do I address a data location on the device?

Error Descriptions

What error messages does the driver produce?

Overview

The Aromat Serial Driver provides an easy and reliable way to connect Aromat Serial devices to OPC Client applications, including HMI, SCADA, Historian, MES, ERP and countless custom applications. It is intended for use with Aromat Matsushita/NAIS FP devices.

Device Setup

Supported Devices

FP0

FPM

FP1 models: C16, C24, and C40

FP2

FP3

FP10SH

Note: Models FP0, FPM, FP2, FP3, and FP10SH should use the "Any FP Model" selection for device configuration. It does not impose any limits on the address range for each data type besides what is allowed by the MEWTOCOL-COM protocol. It will allow the driver to be used with any Aromat Matsushita/NAIS PLC.

Communication Protocol

Aromat Matsushita/NAIS MEWTOCOL-COM

Supported Communication Properties

Baud Rate: 300, 600, 1200, 2400, 4800, 9600, and 19200.

Parity: None, Even, and Odd.

Data Bits: 7 and 8.

Stop Bits: 1 and 2.

Ethernet Encapsulation

This driver supports Ethernet Encapsulation, which allows the driver to communicate with serial devices attached to an Ethernet network using a terminal server. It may be invoked through the COM ID property group in the Channel Properties. For more information, refer to the OPC server's help documentation.

Device IDs

Up to 63 devices numbered from 1 to 63.

Flow Control

When using an RS232/RS422 converter, the type of flow control that is required depends on the needs of the converter. Some converters do not require any flow control, whereas others require RTS flow. To determine a particular converter's flow requirements, consult its documentation.

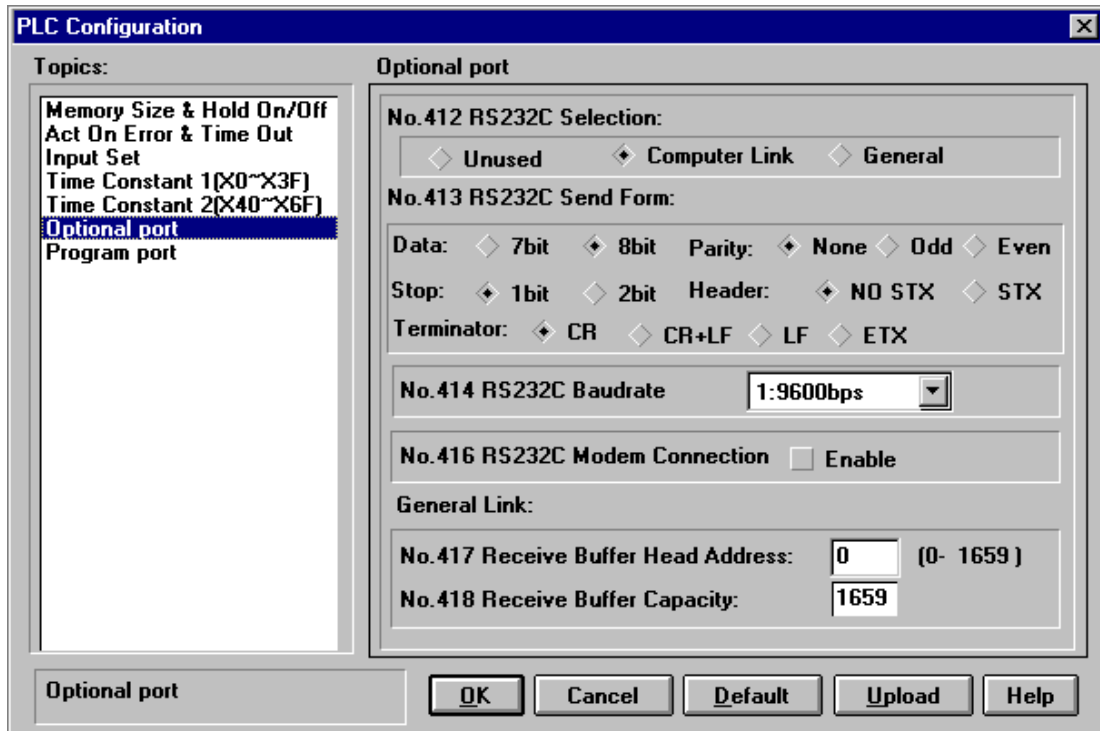
Note: When using the manufacturer's supplied communications cable, it is sometimes necessary to choose a flow control setting of **RTS** or **RTS Always** under the Channel Properties.

Configuring the Optional Communications Port

The Optional Communications Port must be configured using Aromat Matsushita/NAIS's FPSOFT programming software. For more information, refer to the instructions below.

1. To start, open the **Options** menu in **FPSOFT**. Then, select **PLC Configuration**.
2. Next, select the **Optional Port** configuration.

- Fill in the settings as shown in the image below.



- Once finished, click **OK** to download these properties to the PLC.

Note: In testing, it was found that this step might need to be done more than once in order for the settings to take effect. PLC power should also be cycled after sending the new settings. When configuring the Aromat Serial Driver in the server, these settings must be matched.

Channel Properties - General

This server supports the use of simultaneous multiple communications drivers. Each protocol or driver used in a server project is called a channel. A server project may consist of many channels with the same communications driver or with unique communications drivers. A channel acts as the basic building block of an OPC link. This group is used to specify general channel properties, such as the identification attributes and operating mode.

Property Groups	<input type="checkbox"/> Identification	
General	Name	
Ethernet Communications	Description	
Write Optimizations	Driver	
Advanced	<input type="checkbox"/> Diagnostics	
	Diagnostics Capture	Disable

Identification

Name: User-defined identity of this channel. In each server project, each channel name must be unique. Although names can be up to 256 characters, some client applications have a limited display window when browsing the OPC server's tag space. The channel name is part of the OPC browser information.

• For information on reserved characters, refer to "How To... Properly Name a Channel, Device, Tag, and Tag Group" in the server help.

Description: User-defined information about this channel.

• Many of these properties, including Description, have an associated system tag.

Driver: Selected protocol / driver for this channel. This property specifies the device driver that was selected during channel creation. It is a disabled setting in the channel properties.

• **Note:** With the server's online full-time operation, these properties can be changed at any time. This includes changing the channel name to prevent clients from registering data with the server. If a client has already acquired an item from the server before the channel name is changed, the items are unaffected. If, after the channel name has been changed, the client application releases the item and attempts to re-acquire using the old channel name, the item is not accepted. With this in mind, changes to the properties should not be made once a large client application has been developed. Utilize the User Manager to prevent operators from changing properties and restrict access rights to server features.

Diagnosics

Diagnosics Capture: When enabled, this option makes the channel's diagnostic information available to OPC applications. Because the server's diagnostic features require a minimal amount of overhead processing, it is recommended that they be utilized when needed and disabled when not. The default is disabled.

• For more information, refer to "Communication Diagnostics" in the server help.

Not all drivers support diagnostics. To determine whether diagnostics are available for a particular driver, open the driver information and locate the "Supports device level diagnostics" statement.

Channel Properties - Serial Communications

Serial communication properties are available to serial drivers and vary depending on the driver, connection type, and options selected. Below is a superset of the possible properties.

Click to jump to one of the sections: [Connection Type](#), [Serial Port Settings](#) or [Ethernet Settings](#), and [Operational Behavior](#).

• **Note:** With the server's online full-time operation, these properties can be changed at any time. Utilize the User Manager to restrict access rights to server features, as changes made to these properties can temporarily disrupt communications.

Property Groups		
General		
Serial Communications		
Write Optimizations		
Advanced		
Communication Serialization		
	<input type="checkbox"/>	Connection Type
	Physical Medium	COM Port <input type="text"/>
	Shared	No
	<input type="checkbox"/>	Serial Port Settings
	COM ID	6
	Baud Rate	9600
	Data Bits	8
	Parity	Even
	Stop Bits	1
	Flow Control	None
	<input type="checkbox"/>	Operational Behavior
	Report Comm. Errors	Enable
	Close Idle Connection	Enable
	Idle Time to Close (s)	15

Connection Type

Physical Medium: Choose the type of hardware device for data communications. Options include COM Port, None, Modem, and Ethernet Encapsulation. The default is COM Port.

- **None:** Select None to indicate there is no physical connection, which displays the [Operation with no Communications](#) section.
- **COM Port:** Select Com Port to display and configure the [Serial Port Settings](#) section.
- **Modem:** Select Modem if phone lines are used for communications, which are configured in the [Modem Settings](#) section.
- **Ethernet Encap.:** Select if Ethernet Encapsulation is used for communications, which displays the [Ethernet Settings](#) section.
- **Shared:** Verify the connection is correctly identified as sharing the current configuration with another channel. This is a read-only property.

Serial Port Settings

COM ID: Specify the Communications ID to be used when communicating with devices assigned to the channel. The valid range is 1 to 9991 to 16. The default is 1.

Baud Rate: Specify the baud rate to be used to configure the selected communications port.

Data Bits: Specify the number of data bits per data word. Options include 5, 6, 7, or 8.

Parity: Specify the type of parity for the data. Options include Odd, Even, or None.

Stop Bits: Specify the number of stop bits per data word. Options include 1 or 2.

Flow Control: Select how the RTS and DTR control lines are utilized. Flow control is required to communicate with some serial devices. Options are:

- **None:** This option does not toggle or assert control lines.
- **DTR:** This option asserts the DTR line when the communications port is opened and remains on.
- **RTS:** This option specifies that the RTS line is high if bytes are available for transmission. After all buffered bytes have been sent, the RTS line is low. This is normally used with RS232/RS485 converter hardware.
- **RTS, DTR:** This option is a combination of DTR and RTS.
- **RTS Always:** This option asserts the RTS line when the communication port is opened and remains on.
- **RTS Manual:** This option asserts the RTS line based on the timing properties entered for RTS Line Control. It is only available when the driver supports manual RTS line control (or when the properties are shared and at least one of the channels belongs to a driver that provides this support).

RTS Manual adds an **RTS Line Control** property with options as follows:

- **Raise:** This property specifies the amount of time that the RTS line is raised prior to data transmission. The valid range is 0 to 9999 milliseconds. The default is 10 milliseconds.
- **Drop:** This property specifies the amount of time that the RTS line remains high after data transmission. The valid range is 0 to 9999 milliseconds. The default is 10 milliseconds.
- **Poll Delay:** This property specifies the amount of time that polling for communications is delayed. The valid range is 0 to 9999. The default is 10 milliseconds.

Tip: When using two-wire RS-485, "echoes" may occur on the communication lines. Since this communication does not support echo suppression, it is recommended that echoes be disabled or a RS-485 converter be used.

Operational Behavior

- **Report Comm. Errors:** Enable or disable reporting of low-level communications errors. When enabled, low-level errors are posted to the Event Log as they occur. When disabled, these same errors are not posted even though normal request failures are. The default is Enable.
- **Close Idle Connection:** Choose to close the connection when there are no longer any tags being referenced by a client on the channel. The default is Enable.
- **Idle Time to Close:** Specify the amount of time that the server waits once all tags have been removed before closing the COM port. The default is 15 seconds.

Ethernet Settings

Ethernet Encapsulation provides communication with serial devices connected to terminal servers on the Ethernet network. A terminal server is essentially a virtual serial port that converts TCP/IP messages on the Ethernet network to serial data. Once the message has been converted, users can connect standard devices that support serial communications to the terminal server. The terminal server's serial port must be properly configured to match the requirements of the serial device to which it is attached. *For more information, refer to "How To... Use Ethernet Encapsulation" in the server help.*

- **Network Adapter:** Indicate a network adapter to bind for Ethernet devices in this channel. Choose a network adapter to bind to or allow the OS to select the default.
• *Specific drivers may display additional Ethernet Encapsulation properties. For more information, refer to Channel Properties - Ethernet Encapsulation.*

Modem Settings

- **Modem:** Specify the installed modem to be used for communications.
- **Connect Timeout:** Specify the amount of time to wait for connections to be established before failing a read or write. The default is 60 seconds.
- **Modem Properties:** Configure the modem hardware. When clicked, it opens vendor-specific modem properties.
- **Auto-Dial:** Enables the automatic dialing of entries in the Phonebook. The default is Disable. *For more information, refer to "Modem Auto-Dial" in the server help.*
- **Report Comm. Errors:** Enable or disable reporting of low-level communications errors. When enabled, low-level errors are posted to the Event Log as they occur. When disabled, these same errors are not posted even though normal request failures are. The default is Enable.
- **Close Idle Connection:** Choose to close the modem connection when there are no longer any tags being referenced by a client on the channel. The default is Enable.
- **Idle Time to Close:** Specify the amount of time that the server waits once all tags have been removed before closing the modem connection. The default is 15 seconds.

Operation with no Communications

- **Read Processing:** Select the action to be taken when an explicit device read is requested. Options include Ignore and Fail. Ignore does nothing; Fail provides the client with an update that indicates failure. The default setting is Ignore.

Channel Properties - Write Optimizations

As with any OPC server, writing data to the device may be the application's most important aspect. The server intends to ensure that the data written from the client application gets to the device on time. Given this goal, the server provides optimization properties that can be used to meet specific needs or improve application responsiveness.

Property Groups	<input type="checkbox"/> Write Optimizations	
General	Optimization Method	Write Only Latest Value for All Tags
Ethernet Communications	Duty Cycle	10
Write Optimizations		

Write Optimizations

Optimization Method: controls how write data is passed to the underlying communications driver. The options are:

- **Write All Values for All Tags:** This option forces the server to attempt to write every value to the controller. In this mode, the server continues to gather write requests and add them to the server's internal write queue. The server processes the write queue and attempts to empty it by writing data to the device as quickly as possible. This mode ensures that everything written from the client applications is sent to the target device. This mode should be selected if the write operation order or the write item's content must uniquely be seen at the target device.
- **Write Only Latest Value for Non-Boolean Tags:** Many consecutive writes to the same value can accumulate in the write queue due to the time required to actually send the data to the device. If the server updates a write value that has already been placed in the write queue, far fewer writes are needed to reach the same final output value. In this way, no extra writes accumulate in the server's queue. When the user stops moving the slide switch, the value in the device is at the correct value at virtually the same time. As the mode states, any value that is not a Boolean value is updated in the server's internal write queue and sent to the device at the next possible opportunity. This can greatly improve the application performance.
 - **Note:** This option does not attempt to optimize writes to Boolean values. It allows users to optimize the operation of HMI data without causing problems with Boolean operations, such as a momentary push button.
- **Write Only Latest Value for All Tags:** This option takes the theory behind the second optimization mode and applies it to all tags. It is especially useful if the application only needs to send the latest value to the device. This mode optimizes all writes by updating the tags currently in the write queue before they are sent. This is the default mode.

Duty Cycle: is used to control the ratio of write to read operations. The ratio is always based on one read for every one to ten writes. The duty cycle is set to ten by default, meaning that ten writes occur for each read operation. Although the application is performing a large number of continuous writes, it must be ensured that read data is still given time to process. A setting of one results in one read operation for every write operation. If there are no write operations to perform, reads are processed continuously. This allows optimization for applications with continuous writes versus a more balanced back and forth data flow.

- **Note:** It is recommended that the application be characterized for compatibility with the write optimization enhancements before being used in a production environment.

Channel Properties - Advanced

This group is used to specify advanced channel properties. Not all drivers support all properties; so the Advanced group does not appear for those devices.

Property Groups	<input type="checkbox"/> Non-Normalized Float Handling	
General	Floating-Point Values	Replace with Zero
Write Optimizations	<input type="checkbox"/> Inter-Device Delay	
Advanced	Inter-Device Delay (ms)	0

Non-Normalized Float Handling: Non-normalized float handling allows users to specify how a driver handles non-normalized IEEE-754 floating point data. A non-normalized value is defined as Infinity, Not-a-Number (NaN), or as a Denormalized Number. The default is Replace with Zero. Drivers that have native float handling may default to Unmodified. Descriptions of the options are as follows:

- **Replace with Zero:** This option allows a driver to replace non-normalized IEEE-754 floating point values with zero before being transferred to clients.
- **Unmodified:** This option allows a driver to transfer IEEE-754 denormalized, normalized, non-number, and infinity values to clients without any conversion or changes.

● **Note:** This property is disabled if the driver does not support floating point values or if it only supports the option that is displayed. According to the channel's float normalization setting, only real-time driver tags (such as values and arrays) are subject to float normalization. For example, EFM data is not affected by this setting.

● *For more information on the floating point values, refer to "How To ... Work with Non-Normalized Floating Point Values" in the server help.*

Inter-Device Delay: Specify the amount of time the communications channel waits to send new requests to the next device after data is received from the current device on the same channel. Zero (0) disables the delay.

● **Note:** This property is not available for all drivers, models, and dependent settings.

Device Properties - General

A device represents a single target on a communications channel. If the driver supports multiple controllers, users must enter a device ID for each controller.

Property Groups	<input type="checkbox"/> Identification	
General	Name	
Scan Mode	Description	
Ethernet Encapsulation	Channel Assignment	
Timing	Driver	
Auto-Demotion	Model	
Redundancy	ID Format	Decimal
	ID	2
	<input type="checkbox"/> Operating Mode	
	Data Collection	Enable
	Simulated	No

Identification

Name: This property specifies the name of the device. It is a logical user-defined name that can be up to 256 characters long, and may be used on multiple channels.

● **Note:** Although descriptive names are generally a good idea, some OPC client applications may have a limited display window when browsing the OPC server's tag space. The device name and channel name become part of the browse tree information as well. Within an OPC client, the combination of channel name and device name would appear as "ChannelName.DeviceName".

● *For more information, refer to "How To... Properly Name a Channel, Device, Tag, and Tag Group" in server help.*

Description: User-defined information about this device.

● Many of these properties, including Description, have an associated system tag.

Channel Assignment: User-defined name of the channel to which this device currently belongs.

Driver: Selected protocol driver for this device.

Model: This property specifies the specific type of device that is associated with this ID. The contents of the drop-down menu depends on the type of communications driver being used. Models that are not supported by a driver are disabled. If the communications driver supports multiple device models, the model selection can only be changed when there are no client applications connected to the device.

● **Note:** If the communication driver supports multiple models, users should try to match the model selection to the physical device. If the device is not represented in the drop-down menu, select a model that conforms closest to the target device. Some drivers support a model selection called "Open," which allows users to communicate without knowing the specific details of the target device. For more information, refer to the driver help documentation.

ID: This property specifies the device's driver-specific station or node. The type of ID entered depends on the communications driver being used. For many communication drivers, the ID is a numeric value. Drivers that support a Numeric ID provide users with the option to enter a numeric value whose format can be changed to suit the needs of the application or the characteristics of the selected communications driver. The ID format can be Decimal, Octal, and Hexadecimal.

● **Note:** If the driver is Ethernet-based or supports an unconventional station or node name, the device's TCP/IP address may be used as the device ID. TCP/IP addresses consist of four values that are separated by periods, with each value in the range of 0 to 255. Some device IDs are string based. There may be additional properties to configure within the ID field, depending on the driver. For more information, refer to the driver's help documentation.

Operating Mode

Data Collection: This property controls the device's active state. Although device communications are enabled by default, this property can be used to disable a physical device. Communications are not attempted when a device is disabled. From a client standpoint, the data is marked as invalid and write operations are not accepted. This property can be changed at any time through this property or the device system tags.

Simulated: This option places the device into Simulation Mode. In this mode, the driver does not attempt to communicate with the physical device, but the server continues to return valid OPC data. Simulated stops physical communications with the device, but allows OPC data to be returned to the OPC client as valid data.

While in Simulation Mode, the server treats all device data as reflective: whatever is written to the simulated device is read back and each OPC item is treated individually. The item's memory map is based on the group Update Rate. The data is not saved if the server removes the item (such as when the server is reinitialized). The default is No.

Notes:

1. This System tag (`_Simulated`) is read only and cannot be written to for runtime protection. The System tag allows this property to be monitored from the client.
2. In Simulation mode, the item's memory map is based on client update rate(s) (Group Update Rate for OPC clients or Scan Rate for native and DDE interfaces). This means that two clients that reference the same item with different update rates return different data.

Simulation Mode is for test and simulation purposes only. It should never be used in a production environment.

Device Properties - Scan Mode

The Scan Mode specifies the subscribed-client requested scan rate for tags that require device communications. Synchronous and asynchronous device reads and writes are processed as soon as possible; unaffected by the Scan Mode properties.

Property Groups	Scan Mode	
General	Scan Mode	Respect Client-Specified Scan Rate ▼
Scan Mode	Initial Updates from Cache	Disable

Scan Mode: specifies how tags in the device are scanned for updates sent to subscribed clients.

Descriptions of the options are:

- **Respect Client-Specified Scan Rate:** This mode uses the scan rate requested by the client.
- **Request Data No Faster than Scan Rate:** This mode specifies the maximum scan rate to be used. The valid range is 10 to 99999990 milliseconds. The default is 1000 milliseconds.
 - **Note:** When the server has an active client and items for the device and the scan rate value is increased, the changes take effect immediately. When the scan rate value is decreased, the changes do not take effect until all client applications have been disconnected.
- **Request All Data at Scan Rate:** This mode forces tags to be scanned at the specified rate for subscribed clients. The valid range is 10 to 99999990 milliseconds. The default is 1000 milliseconds.
- **Do Not Scan, Demand Poll Only:** This mode does not periodically poll tags that belong to the device nor perform a read to get an item's initial value once it becomes active. It is the client's responsibility to poll for updates, either by writing to the `_DemandPoll` tag or by issuing explicit device reads for individual items. *For more information, refer to "Device Demand Poll" in server help.*
- **Respect Tag-Specified Scan Rate:** This mode forces static tags to be scanned at the rate specified in their static configuration tag properties. Dynamic tags are scanned at the client-specified scan rate.

Initial Updates from Cache: When enabled, this option allows the server to provide the first updates for newly activated tag references from stored (cached) data. Cache updates can only be provided when the new item reference shares the same address, scan rate, data type, client access, and scaling properties. A device read is used for the initial update for the first client reference only. The default is disabled; any time a client activates a tag reference the server attempts to read the initial value from the device.

Device Properties - Timing

The device Communications Timeouts properties allow the driver's response to error conditions to be tailored to fit the application's needs. In many cases, the environment requires changes to these properties for optimum performance. Factors such as electrically generated noise, modem delays, and poor physical connections can influence how many errors or timeouts a communications driver encounters. Communications Timeouts properties are specific to each configured device.

Property Groups	[-] Communication Timeouts	
General	Connect Timeout (s)	3
Scan Mode	Request Timeout (ms)	5000
Ethernet Encapsulation	Retry Attempts	3
Timing	[-] Timing	
Auto-Demotion	Inter-Request Delay (ms)	0

Communications Timeouts

Connect Timeout: This property (which is used primarily by Ethernet based drivers) controls the amount of time required to establish a socket connection to a remote device. The device's connection time often takes longer than normal communications requests to that same device. The valid range is 1 to 30 seconds. The default is typically 3 seconds, but can vary depending on the driver's specific nature. If this setting is not supported by the driver, it is disabled.

● **Note:** Due to the nature of UDP connections, the connection timeout setting is not applicable when communicating via UDP.

Request Timeout: This property specifies an interval used by all drivers to determine how long the driver waits for a response from the target device to complete. The valid range is 50 to 9,999,999 milliseconds (167.6667 minutes). The default is usually 1000 milliseconds, but can vary depending on the driver. The default timeout for most serial drivers is based on a baud rate of 9600 baud or better. When using a driver at lower baud rates, increase the timeout to compensate for the increased time required to acquire data.

Retry Attempts: This property specifies how many times the driver retries a communications request before considering the request to have failed and the device to be in error. The valid range is 1 to 10. The default is typically 3, but can vary depending on the driver's specific nature. The number of retries configured for an application depends largely on the communications environment.

Timing

Inter-Request Delay: This property specifies how long the driver waits before sending the next request to the target device. It overrides the normal polling frequency of tags associated with the device, as well as one-time reads and writes. This delay can be useful when dealing with devices with slow turnaround times and in cases where network load is a concern. Configuring a delay for a device affects communications with all other devices on the channel. It is recommended that users separate any device that requires an inter-request delay to a separate channel if possible. Other communications properties (such as communication serialization) can extend this delay. The valid range is 0 to 300,000 milliseconds; however, some drivers may limit the maximum value due to a function of their particular design. The default is 0, which indicates no delay between requests with the target device.

● **Note:** Not all drivers support Inter-Request Delay. This setting does not appear if it is not supported by the driver.

Device Properties - Auto-Demotion

The Auto-Demotion properties can temporarily place a device off-scan in the event that a device is not responding. By placing a non-responsive device offline for a specific time period, the driver can continue to optimize its communications with other devices on the same channel. After the time period has been reached, the driver re-attempts to communicate with the non-responsive device. If the device is responsive, the device is placed on-scan; otherwise, it restarts its off-scan time period.

Property Groups	[-] Auto-Demotion	
General	Demote on Failure	Enable
Scan Mode	Timeouts to Demote	3
Timing	Demotion Period (ms)	10000
Auto-Demotion	Discard Requests when Demoted	Disable

Demote on Failure: When enabled, the device is automatically taken off-scan until it is responding again.

● **Tip:** Determine when a device is off-scan by monitoring its demoted state using the `_AutoDemoted` system tag.

Timeouts to Demote: Specify how many successive cycles of request timeouts and retries occur before the device is placed off-scan. The valid range is 1 to 30 successive failures. The default is 3.

Demotion Period: Indicate how long the device should be placed off-scan when the timeouts value is reached. During this period, no read requests are sent to the device and all data associated with the read requests are set to bad quality. When this period expires, the driver places the device on-scan and allows for another attempt at communications. The valid range is 100 to 3600000 milliseconds. The default is 10000 milliseconds.

Discard Requests when Demoted: Select whether or not write requests should be attempted during the off-scan period. Disable to always send write requests regardless of the demotion period. Enable to discard writes; the server automatically fails any write request received from a client and does not post a message to the Event Log.

Device Properties - Redundancy

Property Groups	[-] Redundancy	
General	Secondary Path	...
Scan Mode	Operating Mode	Switch On Failure
Timing	Monitor Item	
Redundancy	Monitor Interval (s)	300
	Return to Primary ASAP	Yes

Redundancy is available with the Media-Level Redundancy Plug-in.

● Consult the website, a sales representative, or the user manual for more information.

Modem Setup

This driver supports modem functionality. For more information, please refer to the topic "Modem Support" in the OPC Server Help documentation.

Data Types Description

Data Type	Description
Boolean	Single bit
Word	Unsigned 16 bit value bit 0 is the low bit bit 15 is the high bit
Short	Signed 16 bit value bit 0 is the low bit bit 14 is the high bit bit 15 is the sign bit
DWord	Unsigned 32 bit value bit 0 is the low bit bit 31 is the high bit
Long	Signed 32 bit value bit 0 is the low bit bit 30 is the high bit bit 31 is the sign bit
BCD	Two byte packed BCD Value range is 0-9999. Behavior is undefined for values beyond this range.
LBCD	Four byte packed BCD Value range is 0-99999999. Behavior is undefined for values beyond this range.
Float	32 bit Floating point value The driver interprets two consecutive registers as a Floating point value by making the second register the high word and the first register the low word.

Address Descriptions

Address specifications vary depending on the model in use. Select a link from the following list to obtain specific address information for the model of interest.

[C16 Addressing \(FP1\)](#)

[C24 Addressing \(FP1\)](#)

[C40 Addressing \(FP1\)](#)

[Any FP Model Addressing \(FP0, FPM, FP1, FP2, FP3, FP10SH\)](#)

C16 Addressing (FP1)

The default data types are shown in **bold**.

Address Type	Range	Data Type	Access
External Input Relays	X0-X207 X0.0...X0.F-X12.0...X12.F WX0-WX12 WX0-WX11	Boolean Word Short, BCD DWord, Long, LBCD	Read Only
External Output Relays	Y0-Y207 Y0.0...Y0.F-Y12.0...Y12.F WY0-WY12 WY0-WY11	Boolean Word Short, BCD DWord, Long, LBCD	Read/Write
Internal Relays	R0-R255 R0.0...R0.F-R15.0...R15.F WR0-WR15 WR0-WR14	Boolean Word Short, BCD DWord, Long, LBCD	Read/Write
Special Relays	R14400-R14463 R900.0...R900.F- R903.0...R903.F WR900-WR903 WR900-WR902	Boolean Word Short, BCD DWord, Long, LBCD	Read/Write
Timer Contacts	T0-T127	Boolean	Read Only
Counter Contacts	C0-C127	Boolean	Read Only
Timer/Counter Set Value	SV0-SV127	Word , Short	Read/Write
Timer/Counter Elapsed Value	EV0-EV127	Word , Short	Read/Write
Data Registers	DT0-DT255 DT0-DT254	Word , Short, BCD, DWord, Long, LBCD, Float*	Read/Write
Special Registers	DT9000-DT9069 DT9000-DT9068	Word , Short, BCD, DWord, Long, LBCD, Float*	Read/Write
Index Registers	IX, IY ID	Word , Short DWord , Long	Read/Write

*When using these 32 bit data types, two consecutive 16 bit registers will be used; meaning, if address DT1 is declared type DWord, then both addresses DT1 and DT2 will be used to reference the 32 bit value.

C24 Addressing (FP1)

The default data types are shown in **bold**.

Address Type	Range	Data Type	Access
External Input Relays	X0-X207 X0.0...X0.F-X12.0...X12.F WX0-WX12 WX0-WX11	Boolean Word Short, BCD DWord, Long, LBCD	Read Only
External Output Relays	Y0-Y207 Y0.0...Y0.F-Y12.0...Y12.F WY0-WY12 WY0-WY11	Boolean Word Short, BCD DWord, Long, LBCD	Read/Write
Internal Relays	R0-R1007 R0.0...R0.F-R62.0...R62.F WR0-WR62 WR0 WR61	Boolean Word Short, BCD DWord, Long, LBCD	Read/Write
Special Relays	R14400-R14463 R900.0...R900.F- R903.0...R903.F WR900-WR903 WR900-WR902	Boolean Word Short, BCD DWord, Long, LBCD	Read/Write
Timer Contacts	T0-T143	Boolean	Read Only
Counter Contacts	C0-C143	Boolean	Read Only
Timer/Counter Set Value	SV0-SV143	Word , Short	Read/Write
Timer/Counter Elapsed Value	EV0-EV143	Word , Short	Read/Write
Data Registers	DT0-DT1659 DT0-DT1658	Word , Short, BCD, DWord, Long, LBCD, Float*	Read/Write
Special Registers	DT9000-DT9069 DT9000-DT9068	Word , Short, BCD, DWord, Long, LBCD, Float*	Read/Write
Index Registers	IX, IY ID	Word , Short DWord , Long	Read/Write

*When using these 32 bit data types, two consecutive 16 bit registers will be used; meaning, if address DT1 is declared type DWord, then both addresses DT1 and DT2 will be used to reference the 32 bit value.

C40 Addressing (FP1)

The default data types are shown in **bold**.

Address Type	Range	Data Type	Access
External Input Relays	X0-X207 X0.0...X0.F-X12.0...X12.F WX0-WX12 WX0-WX11	Boolean Word Short, BCD DWord, Long, LBCD	Read Only
External Output Relays	Y0-Y207 Y0.0...Y0.F-Y12.0...Y12.F WY0-WY12	Boolean Word Short, BCD DWord, Long, LBCD	Read/Write

Address Type	Range	Data Type	Access
	WY0-WY11		
Internal Relays	R0-R1007 R0.0...R0.F-R62.0...R62.F WR0-WR62 WR0-WR61	Boolean Word Short, BCD DWord, Long, LBCD	Read/Write
Special Relays	R14400-R14463 R900.0...R900.F- R903.0...R903.F WR900-WR903 WR900-WR902	Boolean Word Short, BCD DWord, Long, LBCD	Read/Write
Timer Contacts	T0-T143	Boolean	Read Only
Counter Contacts	C0-C143	Boolean	Read Only
Timer/Counter Set Value	SV0-SV143	Word , Short	Read/Write
Timer/Counter Elapsed Value	EV0-EV143	Word , Short	Read/Write
Data Registers	DT0-DT1659 DT0-DT1658	Word , Short, BCD, DWord, Long, LBCD, Float*	Read/Write
Special Registers	DT9000-DT9069 DT9000-DT9068	Word , Short, BCD, DWord, Long, LBCD, Float*	Read/Write
Index Registers	IX, IY ID	Word , Short DWord , Long	Read/Write

*When using these 32 bit data types, two consecutive 16 bit registers will be used; meaning, if address DT1 is declared type DWord, then both addresses DT1 and DT2 will be used to reference the 32 bit value.

Any FP Model Addressing (FP0, FPM, FP1, FP2, FP3, FP10SH)

The Any FP Model property allows the driver to handle a range of Aromat Matsushita/NAIS PLCs without specific control over the range of addresses available from the device. The address ranges displayed in the tables below may exceed the range that is available for a particular device. If an unsupported address is requested, the Aromat Serial Driver will mark the requested data item in error.

Note: The default data types are shown in **bold**.

Address Types

Type	Valid Tag Prefixes	Valid Data Types
I/Os (bits)	X, Y	Boolean
I/Os (words)	WX, WY	Word , DWord*, Short, Long*, BCD, LBCD*
Relays (bits)	R	Boolean
Relay (words)	WR	Word , DWord*, Short, Long*, BCD, LBCD*
Timer/Counter Contacts	T/C	Boolean
Data Registers	DT	Word , DWord*, Short, Long*, Float*, BCD, LBCD*
Timer/Counter Registers	SV, EV	Word , Short
Index Registers	IX, IY ID	Word , Short, DWord , Long

*When using these 32 bit data types, two consecutive 16 bit registers will be used. This means that if address DT1 is declared type DWord, then both addresses DT1 and DT2 will be used to store the 32 bit value.

Address Specifications

Address Type	Bit Number	Bit Range	Word Number	Word Range
External Inputs (Read Only)	X<xxx>.<y> xxx-Decimal y-Hex X<xxxxx> xxxxx-Decimal	X000.0-X000.F ... X999.0-X999.F X0-X15999	WX<xxx> xxx-Word Number	WX000-WX999
External Outputs	Y<xxx>.<y> xxx-Decimal y-Hex Y<xxxxx> xxxxx-Decimal	Y000.0-Y000.F ... Y999.0-Y999.F Y -Y15999	WY<xxx> xxx-Word Number	WY000-WY999
Internal Relays	R<xxx>.<y> xxx-Decimal y-Hex R<xxxxx> xxxxx-Decimal	R000.0-R000.F ... R999.0-R999.F R0-R15999	WR<xxx> xxx-Word Number	WR000-WR999
Timer/Counter Contacts (Read Only)	T<xxx> C<xxx> xxx-Decimal	T000-T999 C000-C999	N/A	N/A
Data Registers	N/A	N/A	DT<xxxxx> xxxxx-Decimal	DT00000- DT65535
Special Registers	N/A	N/A	DT<xxxxx> xxxxx-Decimal	DT90000- DT99999
Set Value Area (Timers/Counters)	N/A	N/A	SV<xxxx> xxxx-Decimal	SV0000-SV9999
Elapsed Value Area (Timers/Counters)	N/A	N/A	EV<xxxx> xxxx-Decimal	EV0000-EV9999
Index Registers	N/A	N/A	N/A	IX, IY, ID

Note: <y> bits are only valid between 0 and F hexadecimal. The bit reference used when accessing X, Y, and R memory is only required when using the <xxx>.<y> address format. Normally, direct access to X, Y, and R can be done using standard Aromat Serial addressing (such as X50, Y122, or R140).

Examples

1. Y15 Output Relay 15.
2. T000 Timer Contact 0.
3. C127 Counter Contact 127.

Error Descriptions

The following error/warning messages may be generated. Click on the link for a description of the message.

Address Validation

[Address '<address>' is out of range for the specified device or register](#)

[Data Type '<type>' is not valid for device address '<address>'](#)

[Device address '<address>' contains a syntax error](#)

[Device address '<address>' is not supported by model '<model name>'](#)

[Device address '<address>' is Read Only](#)

[Missing address](#)

Serial Communications

[Communications error on '<channel name>' \[<error mask>\]](#)

[COMn does not exist](#)

[COMn is in use by another application](#)

[Error opening COMn](#)

[Unable to set comm properties on COMn](#)

Device Status Messages

[Device '<device name>' is not responding](#)

[Unable to write to '<address>' on device '<device name>'](#)

Device Specific Messages

[Unable to read block for address type '<mnemonic>', words <start address> - <end address>, on device '<device>'](#)

Address '<address>' is out of range for the specified device or register

Error Type:

Warning

Possible Cause:

A tag address that has been specified dynamically references a location that is beyond the range of supported locations for the device.

Solution:

Verify the address is correct; if it is not, re-enter it in the client application.

Data Type '<type>' is not valid for device address '<address>'

Error Type:

Warning

Possible Cause:

A tag address that has been specified dynamically has been assigned an invalid data type.

Solution:

Modify the requested data type in the client application.

Device address '<address>' contains a syntax error

Error Type:

Warning

Possible Cause:

A tag address that has been specified dynamically contains one or more invalid characters.

Solution:

Re-enter the address in the client application.

Device address '<address>' is not supported by model '<model name>'

Error Type:

Warning

Possible Cause:

A tag address that has been specified dynamically references a location that is valid for the communications protocol but not supported by the target device.

Solution:

Verify the address is correct; if it is not, re-enter it in the client application. Also verify that the selected model name for the device is correct.

Device address '<address>' is Read Only

Error Type:

Warning

Possible Cause:

A tag address that has been specified dynamically has a requested access mode that is not compatible with what the device supports for that address.

Solution:

Change the access mode in the client application.

Missing address

Error Type:

Warning

Possible Cause:

A tag address that has been specified dynamically has no length.

Solution:

Re-enter the address in the client application.

Communications error on '<channel name>' [<error mask>]

Error Type:

Serious

Error Mask Definitions:

B = Hardware break detected.
F = Framing error.
E = I/O error.
O = Character buffer overrun.
R = RX buffer overrun.
P = Received byte parity error.
T = TX buffer full.

Possible Cause:

1. The serial connection between the device and the Host PC is bad.
2. The communications properties for the serial connection are incorrect.

Solution:

1. Verify the cabling between the PC and the PLC device.
2. Verify that the specified communications properties match those of the device.

COMn does not exist**Error Type:**

Fatal

Possible Cause:

The specified COM port is not present on the target computer.

Solution:

Verify that the proper COM port has been selected.

COMn is in use by another application**Error Type:**

Fatal

Possible Cause:

The serial port assigned to a device is being used by another application.

Solution:

Verify that the correct port has been assigned to the channel.

Error opening COMn**Error Type:**

Fatal

Possible Cause:

The specified COM port could not be opened due an internal hardware or software problem on the target computer.

Solution:

Verify that the COM port is functional and may be accessed by other Windows applications.

Unable to set comm properties on COMn

Error Type:

Fatal

Possible Cause:

The serial properties for the specified COM port are not valid.

Solution:

Verify the serial properties and make any necessary changes.

Device '<device name>' not responding

Error Type:

Serious

Possible Cause:

1. The serial connection between the device and the Host PC is broken.
2. The communications properties for the serial connection are incorrect.
3. The named device may have been assigned an incorrect Network ID.
4. The response from the device took longer to receive than the amount of time specified in the "Request Timeout" device property.

Solution:

1. Verify the cabling between the PC and the PLC device.
2. Verify that the specified communications properties match those of the device.
3. Verify that the Network ID given to the named device matches that of the actual device.
4. Increase the Request Timeout property so that the entire response can be handled.

Unable to write to '<address>' on device '<device name>'

Error Type:

Serious

Possible Cause:

1. The serial connection between the device and the Host PC is broken.
2. The communications properties for the serial connection are incorrect.
3. The named device may have been assigned an incorrect Network ID.

Solution:

1. Verify the cabling between the PC and the PLC device.
2. Verify that the specified communications properties match those of the device.

3. Verify that the Network ID given to the named device matches that of the actual device.

Unable to read block for address type '<mnemonic>', words <start address> - <end address>, on device '<device>'

Error Type:

Warning

Possible Cause:

Consult device's user or technical manual for specific error code descriptions. It's likely that an attempt was made to reference a nonexistent location in the specified device.

Solution:

Verify the tags assigned to addresses in the specified range on the device and eliminate ones that reference invalid locations.

Index

A

Address '<address>' is out of range for the specified device or register 22
Address Descriptions 18
Advanced Channel Properties 11
Any FP Model Addressing 20
Auto Dial 9

B

Baud Rate 8
BCD 17
Boolean 17

C

C16 Addressing 18
C24 Addressing 19
C40 Addressing 19
Channel Assignment 12
Channel Properties - General 6
Channel Properties - Write Optimizations 10
Close Idle Connection 9
COM ID 8
Communications error on '<channel name>' [<error mask>] 23
Communications Timeouts 14
COMn does not exist 24
COMn is in use by another application 24
Connect Timeout 14
Connection Type 8

D

Data Bits 8
Data Collection 12
Data Type '<type>' is not valid for device address '<address>' 22

Data Types Description 17
Demote on Failure 15
Demotion Period 15
Description 12
Device '<device name> not responding 25
Device address '<address>' contains a syntax error 23
Device address '<address>' is not supported by model '<model name>' 23
Device address '<address>' is Read Only 23
Device ID 5
Device Properties - Auto-Demotion 15
Device Properties - General 11
Device Setup 5
Diagnostics 7
Discard Requests when Demoted 15
Do Not Scan, Demand Poll Only 13
Driver 7, 12
Duty Cycle 10
DWord 17

E

Error Descriptions 22
Error opening COMn 24

F

Float 17
Flow Control 8

I

ID 12
Idle Time to Close 9
IEEE-754 floating point 11
Initial Updates from Cache 13
Inter-Request Delay 14

L

LBCD 17

Long 17

M

Missing address 23

Model 12

Modem 9

Modem Setup 15

N

Name 12

Network Adapter 9

Non-Normalized Float Handling 11

O

Operational Behavior 9

Optimization Method 10

Overview 4

P

Parity 5, 8, 24

Physical Medium 8

R

Read Processing 9

Redundancy 15

Report Comm. Errors 9

Request All Data at Scan Rate 13

Request Data No Faster than Scan Rate 13

Request Timeout 14

Respect Client-Specified Scan Rate 13

Respect Tag-Specified Scan Rate 13

Retry Attempts 14

S

Scan Mode 13

Serial Communications 7

Serial Port Settings 8

Short 17

Simulated 12

Stop Bits 8

T

Timeouts to Demote 15

U

Unable to read block for address type '<mnemonic>', words <start address> - <end address>, on device '<device>' 26

Unable to set comm properties on COMn 25

Unable to write tag '<address>' on device '<device name>' 25

W

Word 17

Write All Values for All Tags 10

Write Only Latest Value for All Tags 10

Write Only Latest Value for Non-Boolean Tags 10

Write Optimizations 10